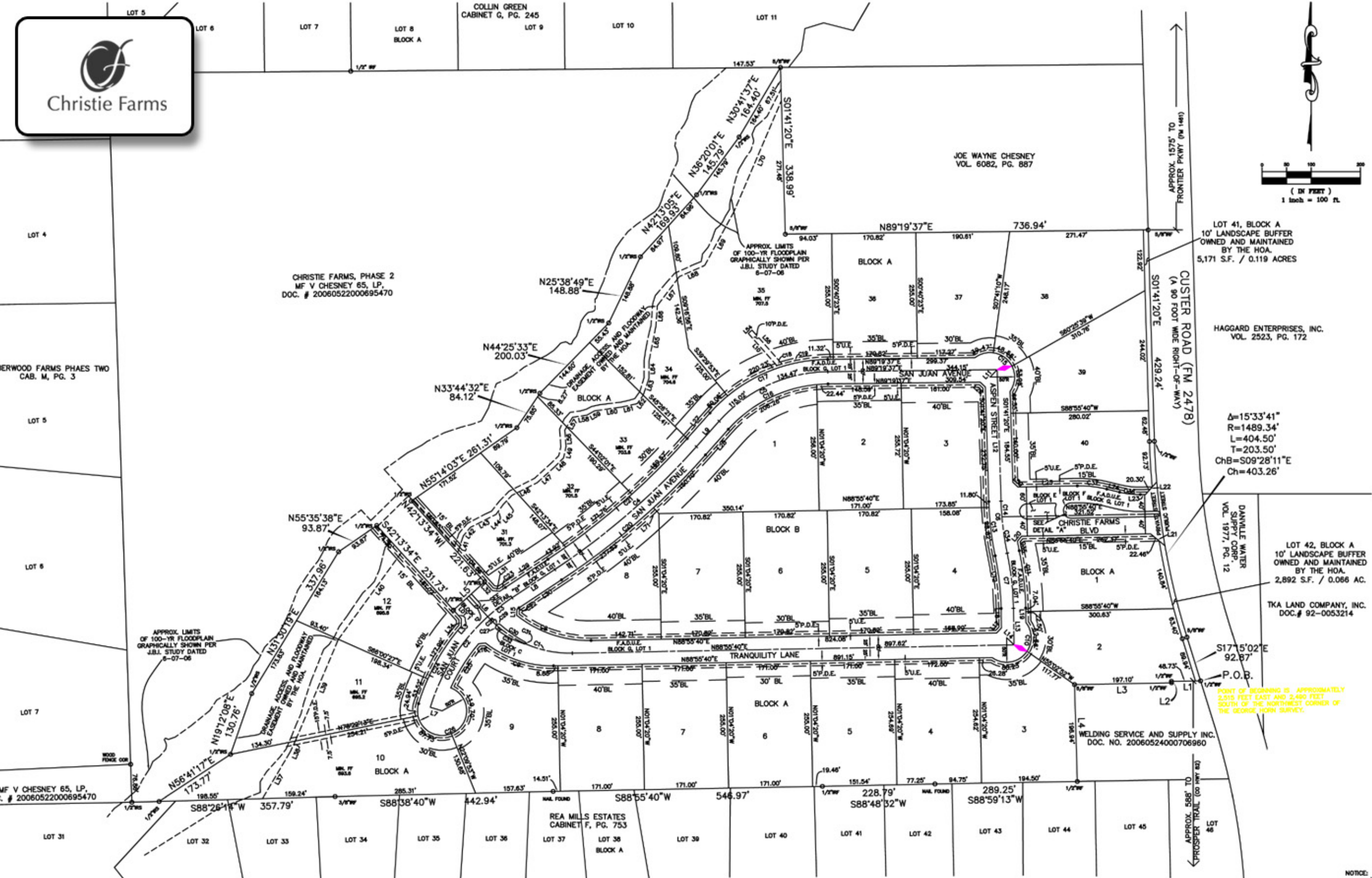




COLLIN GREEN CABINET G, PG. 245



LOCATION MAP



CURVE TABLE

NO.	DELTA	RADIUS	LENGTH	TANGENT	CHORD BEARING	CHORD
C1	48°50'48"	228.45'	183.00'	102.83'	S68°28'57"E	187.28'
C2	30°49'49"	410.00'	220.62'	113.00'	S32°21'32"W	217.98'
C3	8°47'01"	410.00'	62.80'	31.49'	S52°09'57"W	62.79'
C4	14°52'45"	1470.00'	381.74'	191.89'	N49°07'05"E	380.67'
C5	47°38'54"	300.00'	249.49'	132.47'	S63°30'10"W	242.36'
C6	10°08'27"	800.00'	106.20'	53.24'	S08°45'24"E	106.06'
C7	10°45'27"	800.00'	112.65'	56.46'	N08°27'04"W	112.46'
C8	39°41'02"	235.13'	162.85'	84.85'	S71°13'49"E	159.62'
C9	39°02'53"	217.78'	148.41'	77.22'	S71°32'53"E	148.50'
C10	18°34'23"	50.00'	142.89'	350.00'	N43°55'40"E	98.99'
C11	10°45'27"	825.00'	117.35'	58.85'	N08°27'04"W	117.18'
C12	10°45'27"	825.00'	107.89'	54.18'	N08°27'04"W	107.83'
C13	10°08'27"	825.00'	110.82'	55.46'	S08°45'24"E	110.85'
C14	39°41'02"	800.00'	31.74'	15.87'	S03°21'15"E	31.73'
C15	18°34'28"	50.00'	142.00'	329.13'	N48°10'52"W	98.87'
C16	47°38'54"	275.00'	228.70'	121.63'	S63°30'10"W	222.18'
C17	47°38'54"	325.00'	270.28'	143.51'	S63°30'10"W	262.56'
C18	15°34'33"	330.00'	10.92'	5.46'	S72°04'38"W	10.92'
C19	18°18'07"	330.00'	93.89'	47.27'	S81°10'33"W	93.56'
C20	14°52'45"	1465.00'	388.23'	195.22'	N49°07'05"E	387.14'
C21	14°52'45"	1465.00'	375.25'	188.69'	N49°07'05"E	374.20'
C22	0°42'55"	385.00'	4.81'	2.40'	S08°12'00"W	4.81'
C23	15°14'21"	438.00'	4.11'	2.06'	S55°37'40"W	4.11'
C24	23°54'23"	438.00'	181.50'	92.09'	S28°34'49"W	180.18'
C25	15°34'33"	385.00'	106.25'	53.47'	S32°17'47"W	105.92'
C26	268°16'37"	50.00'	232.37'	53.36'	N63°48'07"E	72.87'
C27	99°55'57"	5.00'	8.72'	5.95'	S02°01'54"E	7.88'
C28	0°18'44"	385.00'	2.10'	1.05'	S48°05'28"W	2.10'
C29	83°17'14"	5.00'	7.27'	4.45'	S89°53'28"W	6.84'
C30	13°05'53"	271.13'	61.98'	31.13'	S08°00'54"E	61.86'
C31	189°07'52"	2.00'	5.90'	21.02'	N23°00'05"E	3.88'
C32	20°28'08"	181.78'	64.83'	32.78'	S62°12'56"E	64.46'
C33	180°00'00"	8.50'	20.42'	INFINITE'	N47°46'28"E	13.00'
C34	7°08'38"	800.00'	74.48'	37.28'	S08°18'29"E	74.41'
C35	1°58'53"	878.00'	19.85'	9.78'	S10°01'17"E	19.55'
C36	14°45'10"	185.50'	42.81'	21.43'	S83°41'45"E	42.50'
C37	14°45'10"	234.50'	60.38'	30.38'	N83°41'45"W	60.21'
C38	180°00'00"	15.50'	48.69'	INFINITE'	S01°04'20"E	31.00'
C39	111°48'13"	2.50'	4.88'	3.69'	N30°10'13"W	4.14'
C40	43°36'27"	32.50'	24.74'	13.00'	S01°04'20"E	24.14'
C41	111°48'13"	2.50'	4.88'	3.69'	N33°01'33"E	4.14'
C42	180°00'00"	15.50'	48.69'	INFINITE'	S01°04'20"E	31.00'
C43	14°45'10"	200.00'	51.50'	25.89'	N83°41'45"E	51.36'
C44	14°45'10"	200.00'	51.50'	25.89'	S83°41'45"E	51.36'
C45	180°00'11"	5.00'	17.28'	INFINITE'	N01°04'14"W	11.00'

Δ=15°33'41"
R=1489.34'
L=404.50'
T=203.50'
ChB=S09°28'11"E
Ch=403.26'

LINE TABLE

LINE	BEARING	DISTANCE	LINE	BEARING	DISTANCE
L1	S89°05'44"W	59.15'	L38	N24°53'04"E	23.34'
L2	S01°14'53"E	3.01'	L39	N22°56'51"E	224.46'
L3	S89°05'44"W	197.10'	L40	N36°00'00"E	217.47'
L4	S01°14'53"E	199.84'	L41	N18°35'30"E	35.79'
L5	N47°46'28"E	85.00'	L42	N42°45'53"E	221.13'
L6	S42°13'34"E	56.50'	L43	N63°06'28"E	58.36'
L7	N72°03'22"W	25.00'	L44	N33°53'12"E	25.17'
L8	N56°33'27"E	103.86'	L45	N44°07'48"E	25.42'
L9	N41°40'43"E	69.56'	L46	N63°10'56"E	57.12'
L10	N41°33'28"W	87.50'	L47	N47°50'12"E	48.83'
L11	N43°49'09"E	21.03'	L48	N44°50'28"E	24.79'
L12	S01°14'20"E	287.31'	L49	N12°20'37"E	23.84'
L13	S01°04'20"E	74.54'	L50	N46°22'50"W	14.22'
L14	N46°04'20"W	21.21'	L51	N68°55'40"E	58.51'
L15	S02°27'51"E	12.14'	L52	S89°55'40"W	58.51'
L16	N85°07'07"E	14.34'	L53	N89°55'40"E	13.86'
L17	N43°55'40"E	14.14'	L54	N48°28'35"E	10.00'
L18	N01°04'20"W	39.51'	L55	S41°33'25"E	91.87'
L19	N01°04'20"W	29.54'	L56	N04°30'07"W	33.21'
L20	N39°46'20"E	13.08'	L57	N31°01'21"E	30.72'
L21	S00°14'32"E	37.83'	L58	N82°01'37"E	28.18'
L22	N41°47'13"E	34.01'	L59	N60°48'21"E	18.16'
L23	S88°55'40"W	10.55'	L60	N82°01'37"E	54.44'
L24	N78°19'10"W	28.78'	L61	N77°40'59"E	33.48'
L25	S88°55'40"W	120.84'	L62	N35°31'27"E	21.03'
L26	N48°10'51"W	14.27'	L63	N18°42'01"E	35.87'
L27	N41°46'43"E	69.56'	L64	N00°29'12"E	35.04'
L28	N41°46'43"E	69.56'	L65	N11°03'34"E	73.03'
L29	N84°33'27"E	103.86'	L66	N04°11'21"E	41.87'
L30	N84°33'27"E	103.86'	L67	N37°04'58"E	73.78'
L31	S84°05'30"E	14.89'	L68	N68°27'11"E	56.40'
L32	S42°13'34"E	23.58'	L69	N28°33'57"E	123.83'
L33	S42°13'34"E	23.58'	L70	N23°06'17"E	248.03'
L34	S00°21'31"E	14.89'	L71	S42°32'45"E	18.07'
L35	S42°13'34"E	25.00'	L72	S78°19'10"E	28.78'
L36	N42°13'34"E	25.00'	L73	N88°55'40"E	33.90'
L37	N30°42'04"E	111.18'	L74	S88°55'40"W	175.29'

NOTICE: SELLING A PORTION OF THIS ADDITION BY METES AND BOUNDS IS A VIOLATION OF TOWN ORDINANCE AND STATE LAW AND IS SUBJECT TO FINES AND WITHHOLDING OF UTILITIES AND BUILDING PERMITS.

Final Plat

CHRISTIE FARMS, PHASE 1

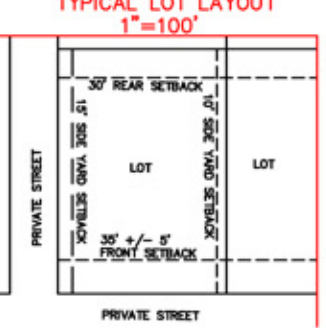
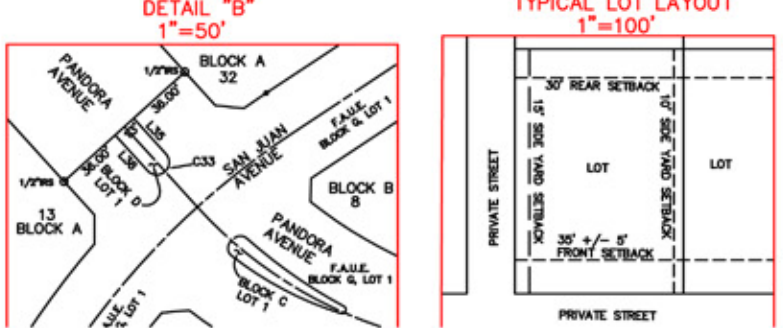
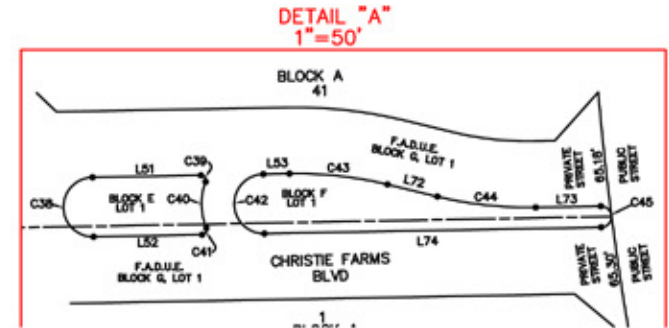
38.952 ACRES OUT OF
GEORGE HORN SURVEY, ABSTRACT NO. 412
COLLIN COUNTY, TEXAS

30 SF-SINGLE FAMILY ESTATES (SF-E) LOTS PD-32-SF-E
MF V CHESNEY 65, LP **OWNER/DEVELOPER**

4516 LOVERS LANE, SUITE 350 (214)599-0852
DALLAS, TEXAS 75225

JONES & BOYD, INC. **SURVEYOR/ENGINEER**
17090 Dallas Parkway, Suite 200 (972)248-7676
Dallas, Texas 75248

- LEGEND**
- IRON ROD FOUND
 - IRON ROD SET WITH YELLOW CAP STAMPED "J&B"
 - BUILDING LINE (SET BACK)
 - DRAINAGE EASEMENT
 - DRAINAGE & UTILITY EASEMENT
 - FENCE EASEMENT
 - HOME OWNERS ASSOCIATION
 - RIGHT-OF-WAY
 - UTILITY EASEMENT
 - WATER EASEMENT
 - PRIVATE DRAINAGE EASEMENT TO H.O.A.



LOT AREA TABLE

BLOCK/LOT	SQ. FT.	ACRES
A-1	44,179	1.014
A-2	44,407	1.019
A-3	46,665	1.071
A-4	43,789	1.005
A-5	43,581	1.000
A-6	43,805	1.001
A-7	43,805	1.001
A-8	43,805	1.001
A-9	54,193	1.244
A-10	66,047	1.516
A-11	59,757	1.372
A-12	55,623	1.277
A-31	43,574	1.000
A-32	43,562	1.000
A-33	43,566	1.000
A-34	60,810	1.404

LOT AREA TABLE

BLOCK/LOT	SQ. FT.	ACRES
A-36	43,560	1.000
A-37	43,560	1.000
A-38	58,887	1.352
A-39	46,787	1.074
A-40	43,616	1.001
B-1	54,550	1.252
B-2	43,824	1.006
B-3	43,925	1.008
B-4	43,563	1.000
B-5	43,560	1.000
B-6	43,560	1.000
B-7	43,560	1.000
B-8	45,396	1.042
C-1	606	0.014
D-1	391	0.009
E-1	2,162	0.050